

Garage Complete Packages, Garage Ventilation Fans, Garage Flooring, Garage Door Insulation, Garage Overhead Storage, Garage Storage Cabinets, Garage Vacuums, Garage & Patio Heaters, Large Shop or Commercial Fans, Power Factor Conditioning, Solar Attic Fans, Skylights



CoolMyGarage.com

America's Best
Home Products, L.C.
855-GF14FAN

Copyright 2005-2014 All Right Reserved

WWW.COOLMYGARAGE.COM

GF-14 Garage Fan and Attic Cooler

HOT Garage Problem

In hot climates the radiant heat trapped in a garage raises the temperature at least 20 degrees or more than the outside ambient air temperature.

Also, the attic above is as much as 40 to 60 degrees higher than the outside temperature.

The attic acts as a super-large radiant heater forcing the air conditioner to work harder.

The GF-14 moves this super-heated air out of the attic through "Positive Pressure Ventilation" pressurizing the attic with cooler air and forcing this super-heated air out the existing attic vents.

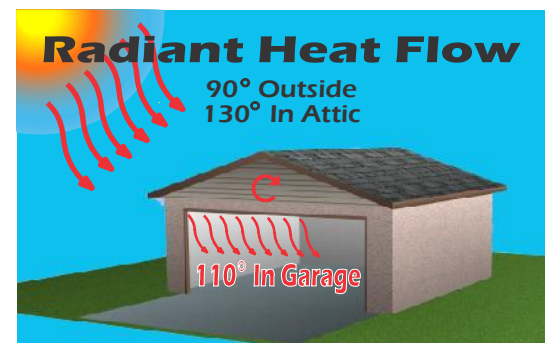
By doing so, the GF-14 will lower the air conditioner load, and reduce energy consumption.

HOT Garage Solution

- ☑ Simple Through the Ceiling Fan Installation
- ☑ Properly Sized Garage Door Intake Vents
- ☑ Energy Efficient-Low Power Usage (\$25 year)
- ☑ High Air Flow Up To 1350 Cubic Feet Per Minute
- ☑ Balances Attic/Outdoor Temperatures
- ☑ Removes Condensation In Attic and Garage
- ☑ Prevents Premature Aging of Roofing Products
- ☑ Sealed Self Lubricating 55 Watt Motor
- ☑ Fire Rated and UL Listed Components
- ☑ Adjustable Thermostat 90 to 130 Degrees
- ☑ Minimal Internal Impact on House Design
- ☑ Positive Exhaust Air Flow Through Attic Vents
- ☑ Effective for a Typical Two/Three Car Garage
- ☑ Home Owners Association Accepted
- ☑ Ten Year Warranty
- ☑ Made In The USA



Before



After



Installation Instructions For GF-14

1. Cut a 16.25" square hole centered in between the ceiling joists where you wish to mount the GF-14 fan. Toward the back and center of the garage is best.



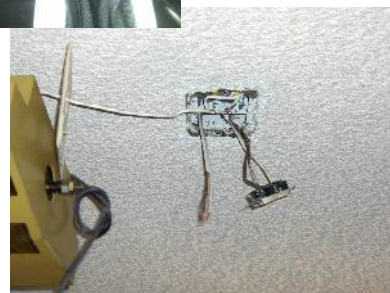
2. Place the GF-14 in the hole and use an expandable mounting bracket on each side spread to the joists and screw in place with 2.5" drywall screws as shown at the top of the GF-14. Now lock open the fire damper with the fusible link. **This stays locked open!**



3. Trip the breaker off and wire the FGF-14 into the garage door outlet. Turn the breaker back on. Test the fan by holding a lighter on the thermostat to turn it on and a cube of ice to turn it off



4. Screw the grill in to the 2x4's you placed in the attic holding the GF-14 secure.



5. Center the intake grills in the raised panel in the garage door. Trace the inside of the intake grill with a pencil and drill each corner with a 1/2" drill so you can get tin snips in and cut out the hole. Screw or pop rivet the intake vents on to the door. Place one on each end of the garage door and in the bottom panel for maximum air flow.



Please call us at 855-GF-14FAN for any tips on the GF-14 Garage Fan Installation.

Thank You For Your Purchase - Enjoy!

If you take pictures of your installation and give us a testimonial for our website, e-mail them to us We'll send you our "**America's Best**" water heater jacket FREE! \$39.99 Value! Send to ray@coolmygarage.com.



GFT-16 or 18 Garage Fan Thru-Wall Fan

HOT Garage Problem

In hot climates the radiant heat trapped in a garage raises the temperature at least 20 degrees or more than the outside ambient air temperature.

Also, the room above is as much as 10 to 20 degrees higher than the other rooms temperature.

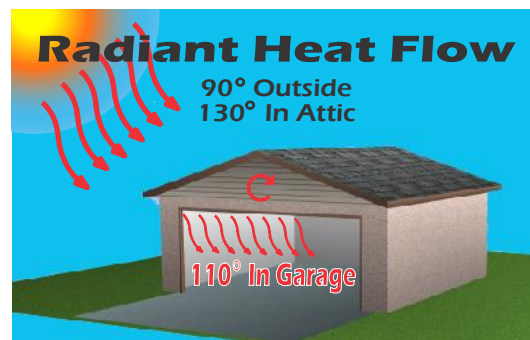
The attic acts as a super-large radiant heater forcing the air conditioner to work harder on the top floor.

The GF-16 moves the hot air out of the garage creating a breeze in the garage all day long.

By doing so, the GF-16 will lower the temperature in the garage, cooling the room above it and lowering the air conditioner load, and reduce energy consumption.



Before



HOT Garage Solution

- ☑ Simple Through the Wall Fan Installation
- ☑ Properly Sized Garage Door Intake Vents
- ☑ Energy Efficient-Low Power Usage (\$25 year)
- ☑ High Air Flow Up To 1350 Cubic Feet Per Minute
- ☑ Balances Attic/Outdoor Temperatures
- ☑ Removes Condensation In The Garage
- ☑ Prevents Premature Aging of Roofing Products
- ☑ Sealed Self Lubricating 55 Watt Motor
- ☑ 24 Hour Timer Control
- ☑ Minimal Internal Impact on House Design
- ☑ Positive Exhaust Air Flow
- ☑ Effective for a Typical Two/Three Car Garage
- ☑ Home Owners Association Accepted
- ☑ Two Year Warranty
- ☑ Made In The USA



Installation Instructions for the GFT-16 or 18

GFT-16 is for 16" on center and the GFT-18 if for 24" on center studs.

A - Using a stud finder, determine the center of the studs and mark each stud.

B - Then measure about 6-8" down from the ceiling and draw a mark in the center so that you make the cut as drawn.

C - Draw a 12.5" for 16 or 14.5" for 18 square from the center point. Drill out the 4 corners all the way through the outside wall.

D - Draw a square for the inset of the fan on the outside centered of the pilot holes. Cut out each side with your drywall saw and or saws-all.

E - Next install the GFT-16 or 18 fan into the square hole and secure into the stud on one side and the other using a drywall anchor. Do the same with the grill on the outside with louvers pointing down.

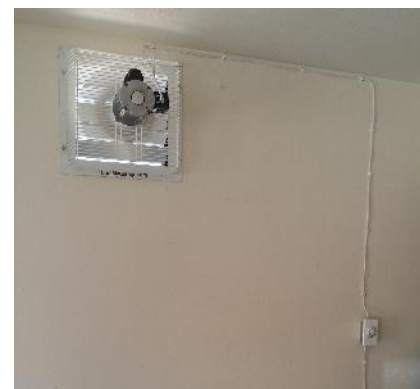
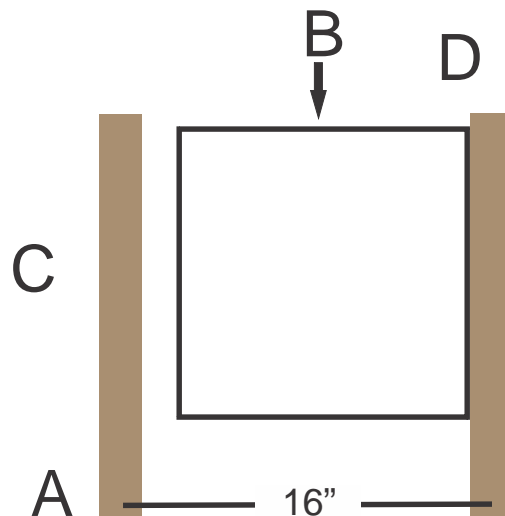
F - Center the intake grills in the raised panel in the garage door. Trace the inside of the intake grill with a pencil and drill each corner with a 1/2" drill so you can get tin snips in and cut out the hole. Screw or pop rivet the intake vents on to the door. Place one on each end of the garage door and in the bottom panel for maximum air flow.

G - Wire the fan and place the timer in line where you want it then run the wire over to the nearest outlet and secure the line with staples. Attach the plug to the wire and plug in.

Please call 855-431-4326 for any tips on the GFT-16 or 18 Garage Fan Installation.

Thank You For Your Purchase - Enjoy!

If you take pictures of your installation and give us a testimonial for our website, e-mail them to us We'll send you our "**America's Best**" water heater jacket FREE! \$39.99 Value! Send to ray@coolmygarage.com.



GARAGE DOOR RADIANT BARRIER Heat Reflective Wrap

Problems & Solutions

In hot climates the radiant heat trapped in a garage raises the temperature at least 20 degrees or more than the outside ambient air temperature.

Also, the garage door is as much as 20 to 40 degrees higher than the outside temperature.

The garage door acts as a super-large radiant heater heating the garage.

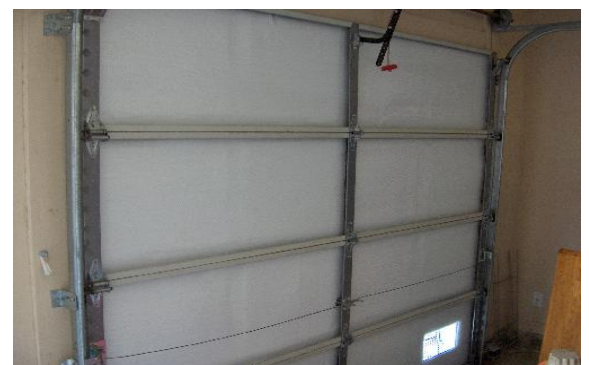
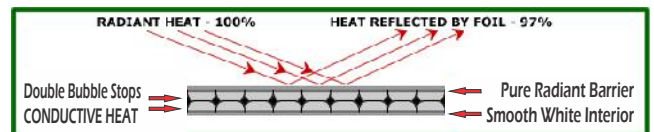
The garage door reflective wrap reflects 97% of the radiant heat coming in from the door keeping your garage up to 20 degrees cooler.

By doing so, the garage will be cooler and thus will lower the air conditioner load, and reduce energy consumption in the house.

Features and Benefits

- ☑ Stops Heat - Turns It Away
- ☑ A True Radiant Barrier
- ☑ NASA Technology
- ☑ Reflects 97% Heat
- ☑ Lowers Garage Temp
- ☑ Nice White Finish
- ☑ Best Insulation Available
- ☑ Proudly Made In USA

Copyright © 2005-2014 All Right Reserved



GARAGE DOOR RADIANT BARRIER Heat Reflective Panels

INSTALLATION INSTRUCTIONS

1. Clean door off with window type cleaner to get dust and dirt off door.
2. Apply the adhesive tabs (use only than 6 per panel) on the raised panel corners to give the insulation panel the maximum distance from the door when installed.
3. Slip the panel in to the door panel and trim if necessary.
4. Fold the insulation panel horizontally and remove the tape on the top side, make sure the insulation panel is in the bottom tightly. Then fold the panel up and secure to tape. Fold the bottom up and remove the tape and secure the panel to the tape. Repeat in each panel.
5. Attach the label in the center panel about eye level.

Thank Your For Choosing America's Best Home Products. Tell your friends!!!

CoolMyGarage.com

- ☑ **STOPS HEAT - TURNS IT AWAY**
- ☑ **NASA TECHNOLOGY - RADIANT BARRIER**
- ☑ **REFLECTS 97% OF RADIANT HEAT**
- ☑ **LOWERS GARAGE DOOR TEMPERATURE**
- ☑ **SMOOTH WHITE INTERIOR FINISH**
- ☑ **BEST INSULATION AVAILABLE**
- ☑ **PROUDLY MADE IN USA**
- ☑ **SAVES ENERGY**



America's Best Reflective Water Heater Jacket

America's Best Radiant Barrier Water Heater Jacket works by reflecting heat back into the water heater. The jacket can be installed in minutes, and fits both gas and electric units. America's Best Radiant Barrier Water Heater Jacket can save up to 20% on hot water heating costs

Reduces Heating Costs

- **Easy to Install**
- **Easy cut-to-fit**
- **Fits Gas or Electric Units**
- **Contains No Fiberglass**

Before



After

